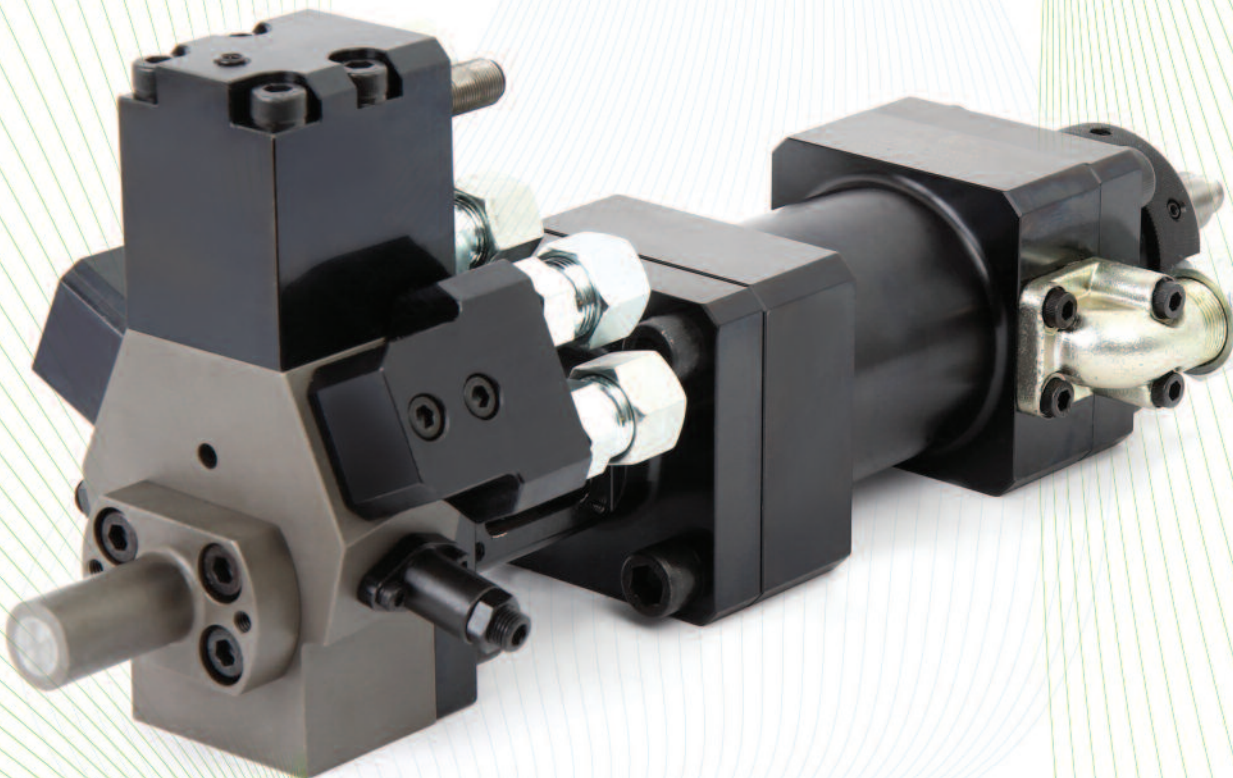


ULTIMATE HIGH PRESSURE MIXING HEAD

HIGH PRESSURE MIXING HEAD



INTRODUCTION OF MIXING HEAD

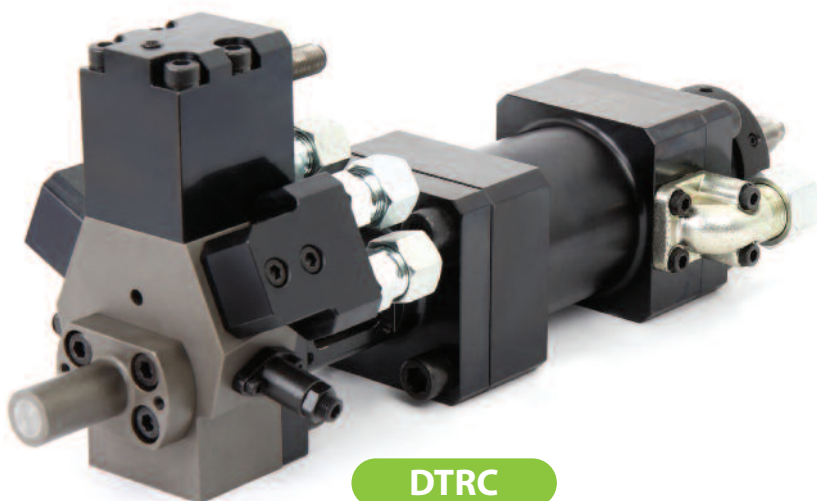
Mixing Head is a core part of foaming machine. It decides quality of end products and affects to efficiency of raw materials. DUT's mixing head has improved from advantages of L-type mixing head, and it has patented as "Double Tilted Injection System"

Long range of model helps you to choose your fitted applicable mixing head.

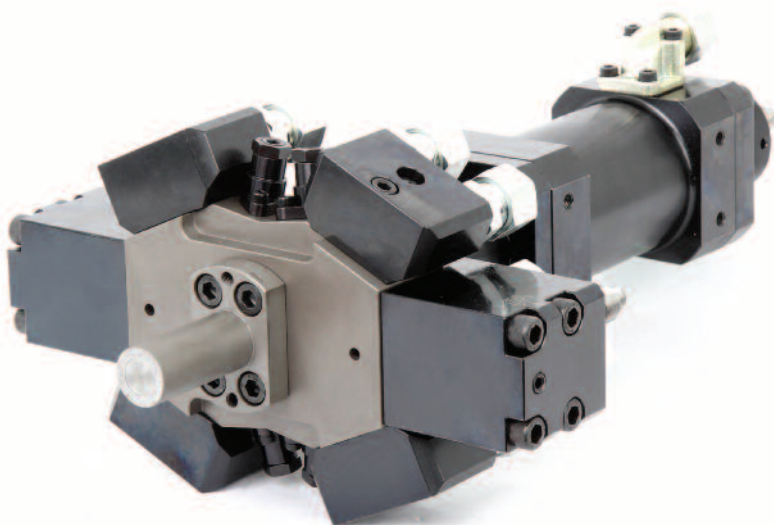
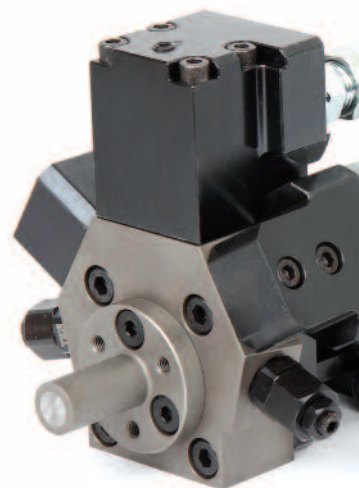
Double Tilted Nozzle and Reared Chamber Injection - DTRC

L-Type - DHVA Series

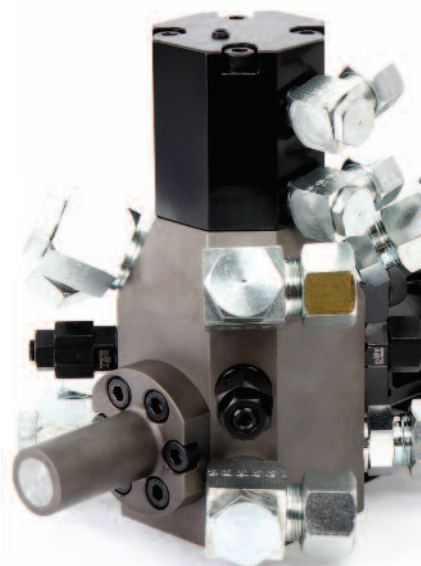
R-Type - DHS Series



DTRC

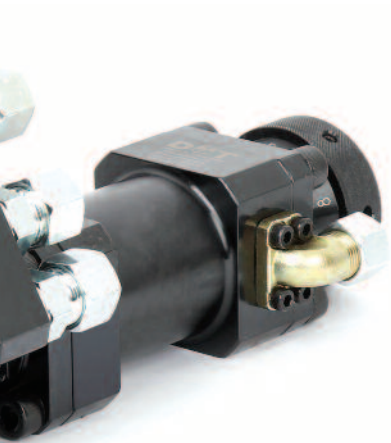


DHV 4K



2K,3K,4K AND 4KSH TYPE

- 2K – 2Components Mixing Head with 2nozzles(POL/ISO)
- 3K – 3Components Mixing Head with 2nozzles and a pigment nozzle.
(POL/ISO/Pigment)
- 4K – 4Components Dual Mixing Head with 4nozzles(POL/ISO)
- 4KSH – 4Components SH Mixing Head with 4 nozzles(POL/ISO)
- 6KSH – 6Components SH Mixing Head with 6 nozzles(POL/ISO)



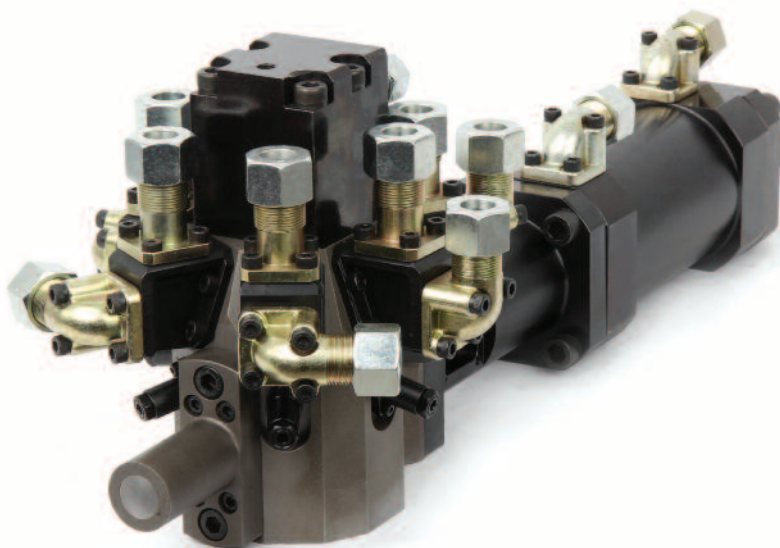
DHV



DHS



DHVA 4KSH



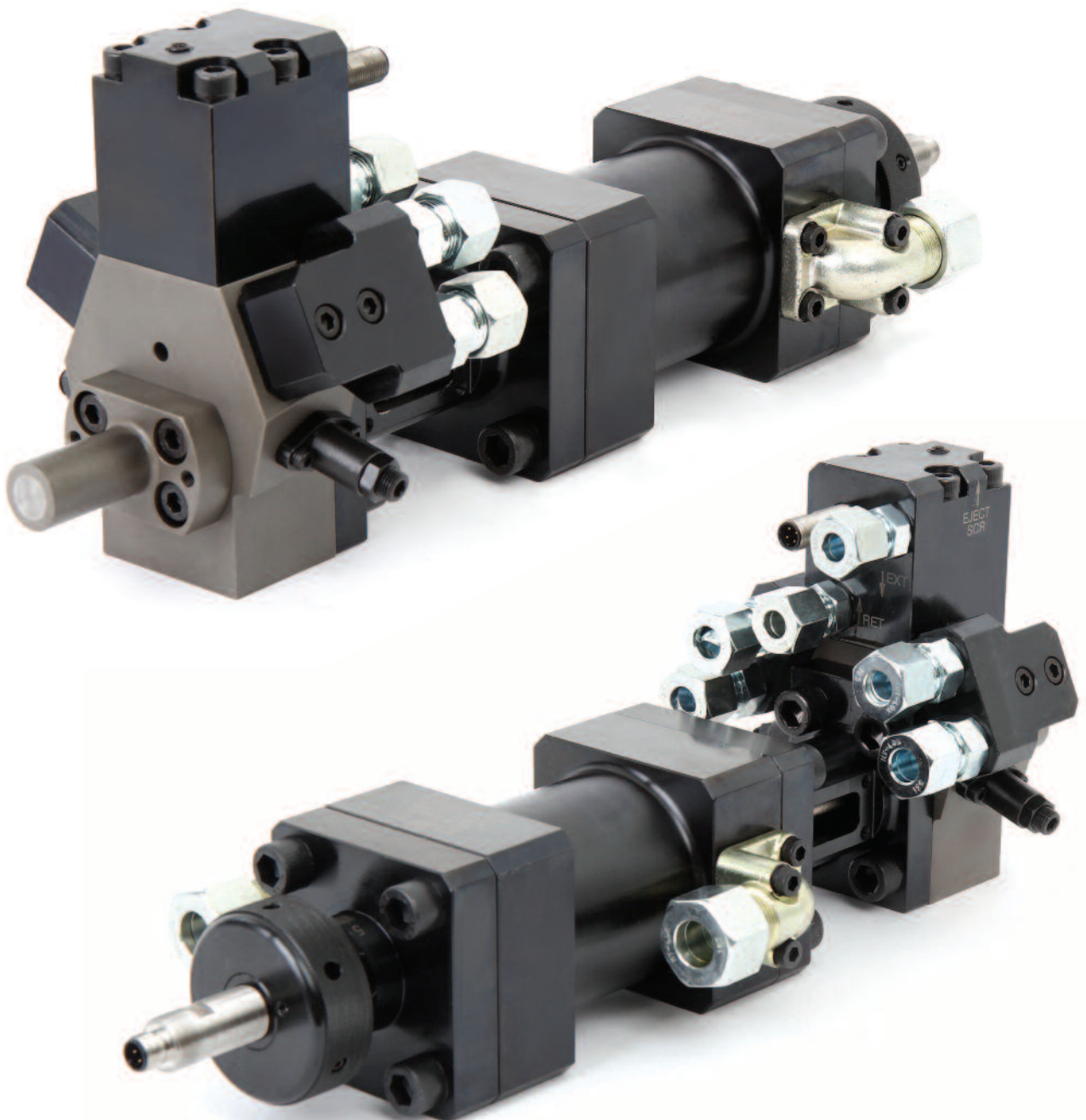
DHV 6KSH

DTRC SERIES (Double Tilted Rear Chamber)

DUT's Double Tilted Rear Changer Mixing Head System(DTRC) is designed to make maximum mixing efficiency while still maintaining a desirable laminar flow. The DTRC Mix Heads are engineered to provide more chemical stream collisions (Impingement) inside the mix head's mixing chamber via double tilted nozzle angle.

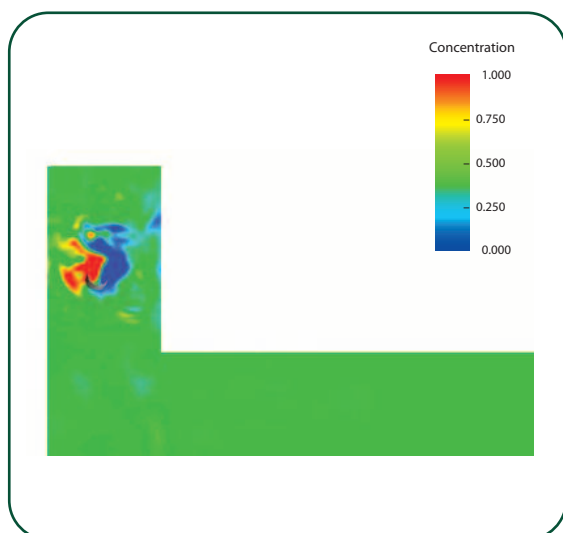
Moreover, the additional space provided in the mixing chamber for mixing is then able to provide the customers with the best mixing efficiency with lower pressure than previous L-type systems that are currently available by other OEM's.

•Maximum one year warranty

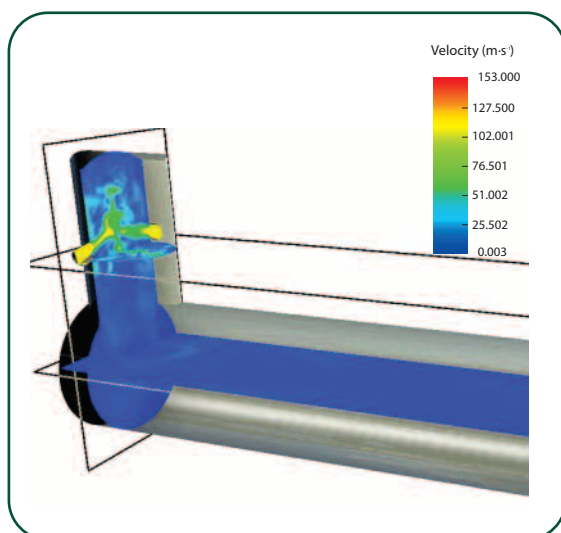


FEATURES

- Maximum efficiency by "Double Tilted Rear Chamber Mixing System"
- Ability to obtain the best mixing efficiency with lower pressure than other OEM's mixing systems
- High compatibility with various type of foaming machine
- Innovative nozzle control for minimum switching times for use with multi-component
- Anti-stick locking design(X-groove technology has applied to cleaning piston) & Anti-scrap floating design.
- Long life cycle & low maintenance costs
- Repeatable Stroke adjustments (for L-Style Mix Heads) from one mix head to the next
- The enhancement of the initial kinetic energy, which is caused by 1st and 2nd collisions
- The kinetic energy and laminar flow are further enhanced by the reversing effect in the extended mixing chamber
- With high viscosity materials, the DTRC maximizes the mixing efficiency by offsetting the process of kinetic energy
- The DTRC provides the softest laminar flow available with the best mixed Polyurethane

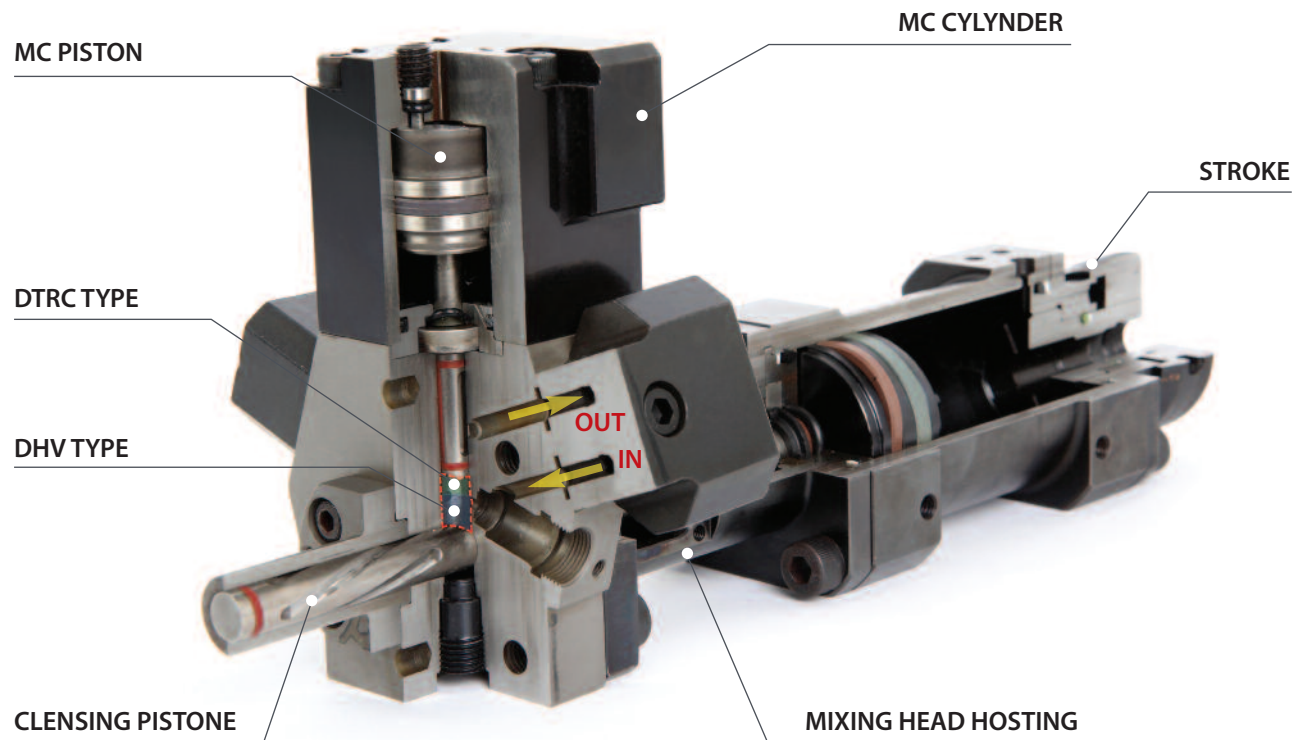


Concentration

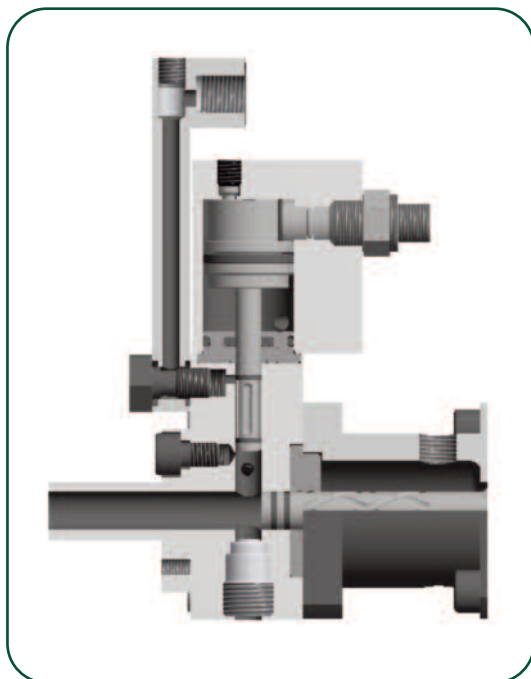


Velocity

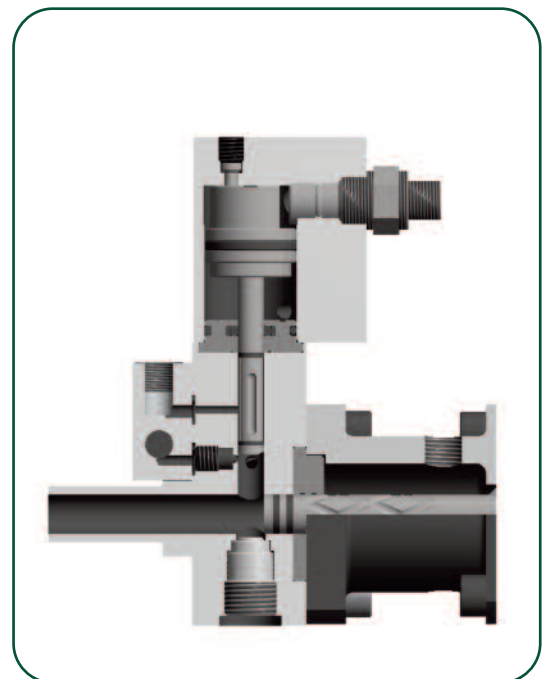
DTRC SERIES (Double Tilted Rear Chamber)



DTRC & DHV 3K TYPE

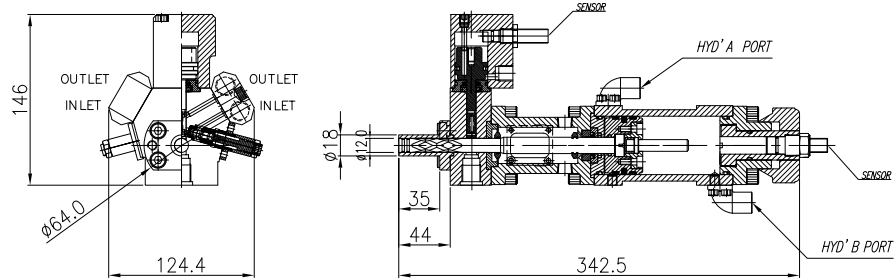


Non-Circulation

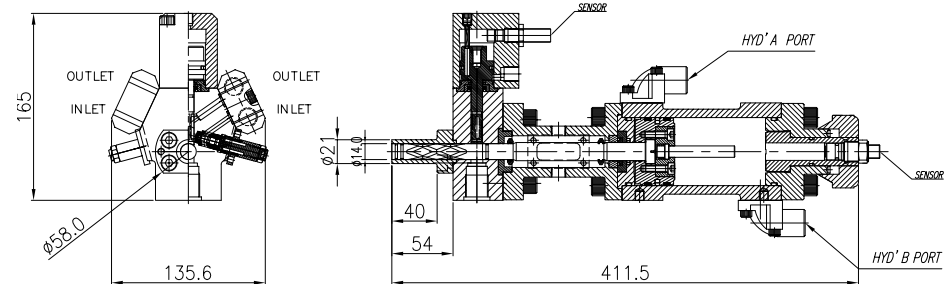


Circulation

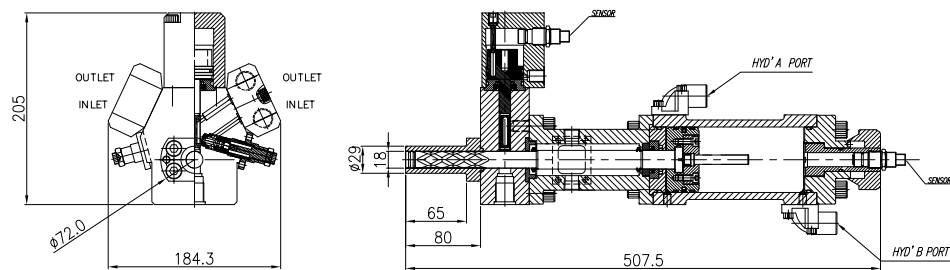
DTRC 0812-2K



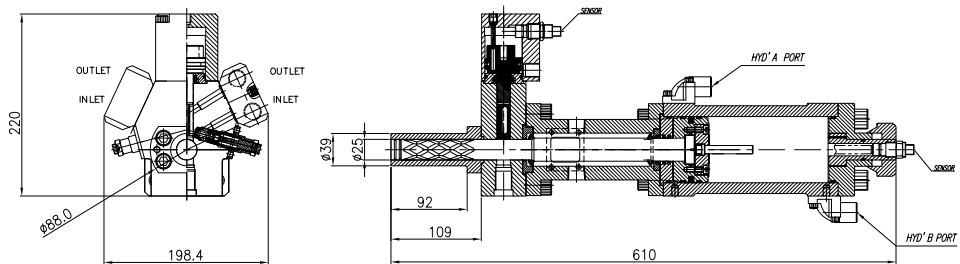
DTRC 1014-2K



DTRC 1218-2K



DTRC 1625-2K



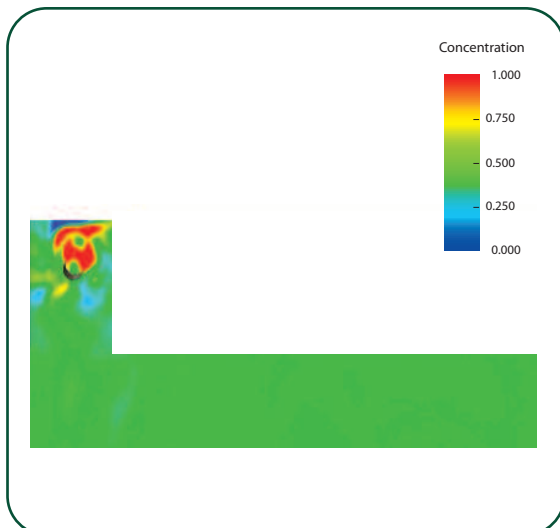
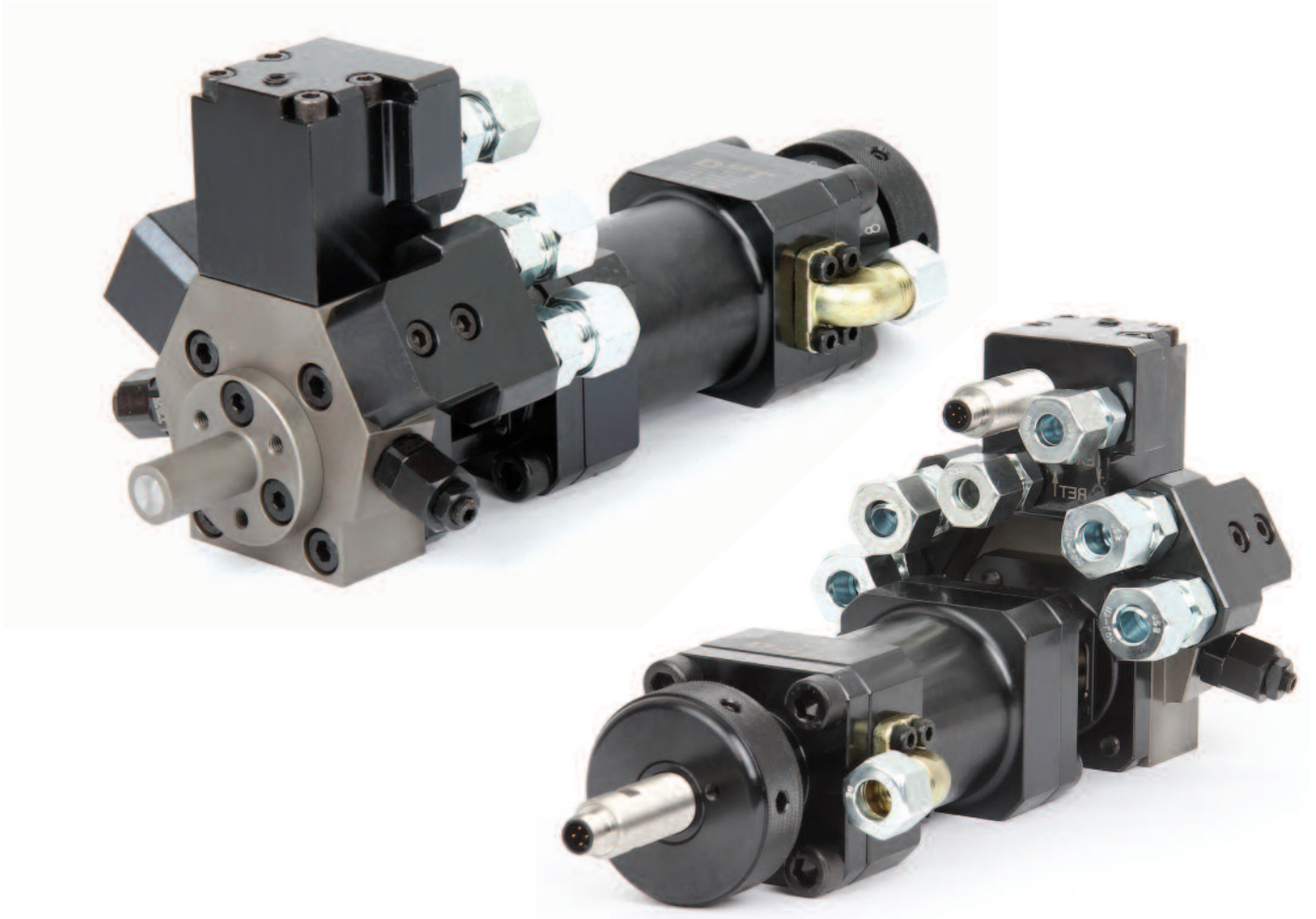
MIXING HEAD MODEL	Close Mold			Open Mold	KG
	1 : 1	1 : 2	1 : 3		
DTRC-0406-2K	20~120	30~90	40~80	20~50	5kg
DTRC-0608-2K	30~250	45~190	80~160	35~90	7kg
DTRC-0608-3K	30~250	45~190	80~160	35~90	7kg
DTRC-0710-2K	35~350	50~260	70~2450	40~140	8kg
DTRC-0812-2K	40~420	50~320	70~280	50~180	8kg
DTRC-0812-3K	40~420	50~320	70~280	50~180	8kg
DTRC-1014-2K	50~700	60~500	80~450	80~300	17kg
DTRC-1218-2K	130~1100	140~900	150~750	120~500	23kg
DTRC-1218-4K	130~1100	140~900	150~750	120~500	25kg
DTRC-1625-2K	370~2500	380~1800	390~1600	400~900	32kg

DHV SERIES

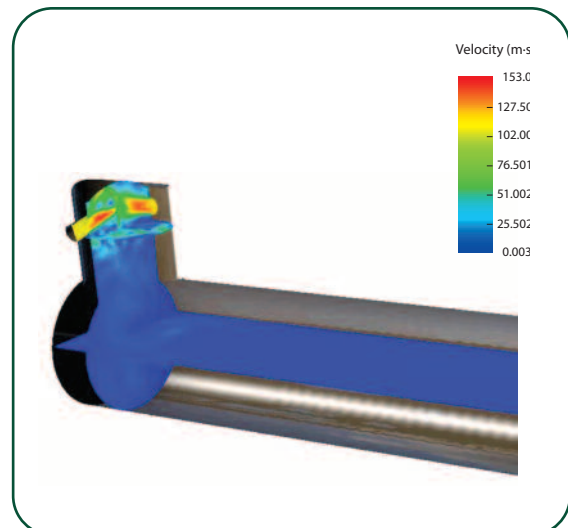
DHV Series has designed for customers who need ultimate quality of end products.
(Double Tilted Injection System)

DHVM Series is special type for length of outlet pipe and it is applied to close mold.

- Maximum one year warranty

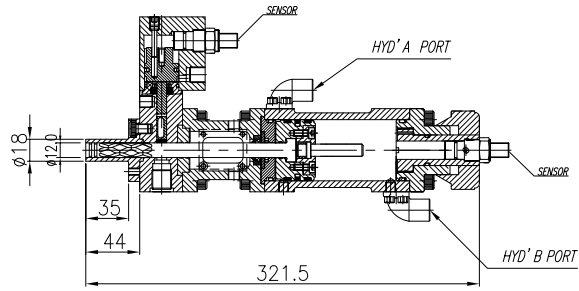
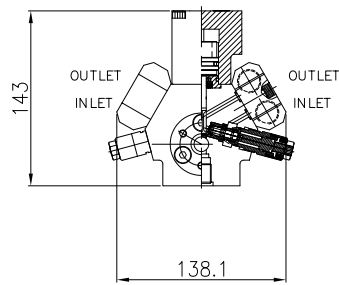


Concentration

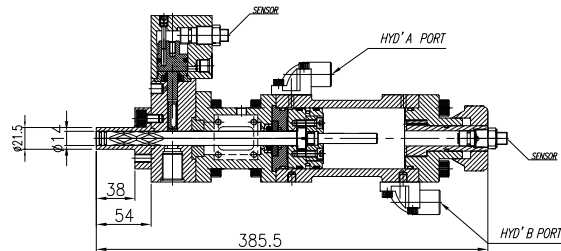
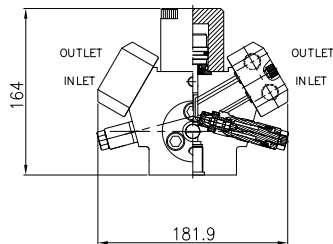


Velocity

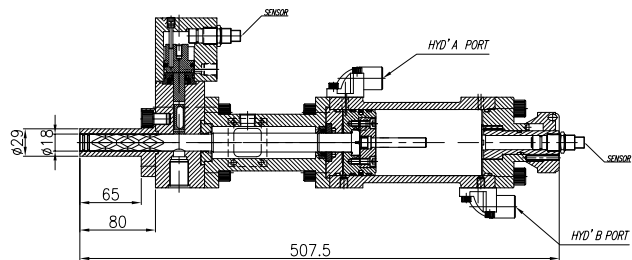
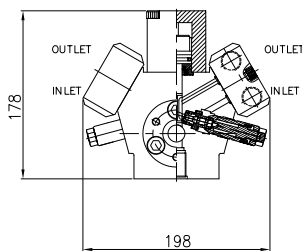
DHV 0812-2K



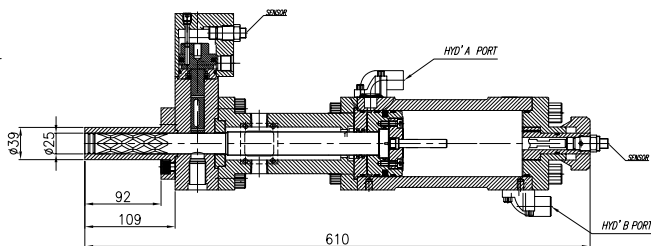
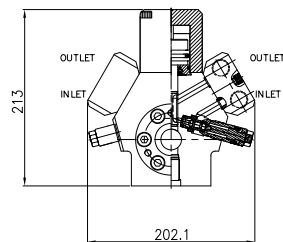
DHV 1014-2K



DHV 1218-2K



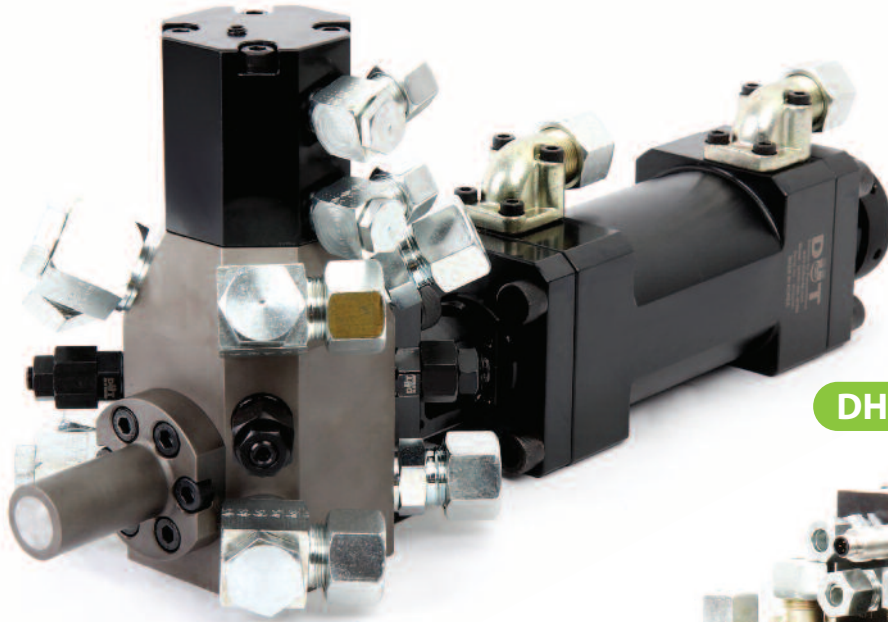
DHV 1625-2K



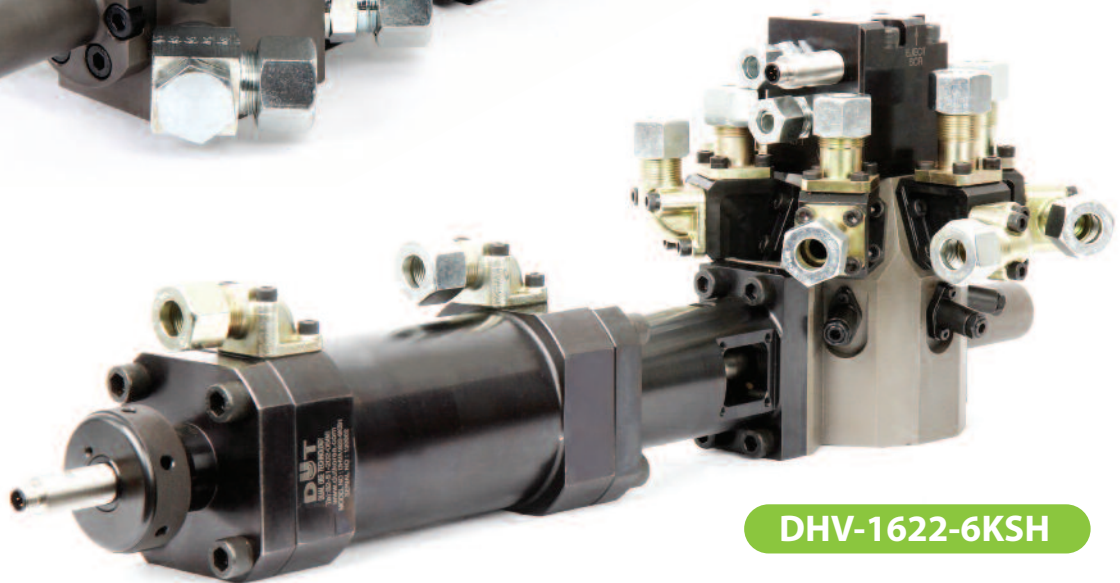
MIXING HEAD MODEL	Close Mold			Open Mold	KG
	1 : 1	1 : 2	1 : 3		
DHV-0507-2K	30~190	45~180	45~165	30~80	6kg
DHV-0812-2K	40~420	50~320	70~280	50~180	8kg
DHV-0812-3K	40~420	50~320	70~280	50~180	8kg
DHV-0812-4K	40~420	50~320	70~280	50~180	11kg
DHV-1014-2K	50~700	60~500	80~450	60~300	17kg
DHV-1014-3K	50~700	60~500	80~450	60~300	17kg
DHV-1014-4K	50~700	60~500	80~450	80~300	19kg
DHV-1218-2K	130~1100	140~900	150~750	120~500	23kg
DHV-1218-3K	130~1100	140~900	150~750	120~500	23kg
DHV-1422-2K	280~1600	250~1800	240~1500	230~550	27kg
DHV-1422-4K	280~1600	250~1800	240~1500	230~550	29kg
DHV-1622-12K	130~1200	130~1000	150~850	130~680	39kg
DHV-1625-2K	370~2500	380~1880	600~1660	400~900	32kg
DHV-1625-4K	370~2500	380~1880	600~1660	400~900	35kg

4KSH & 6KSH SERIES

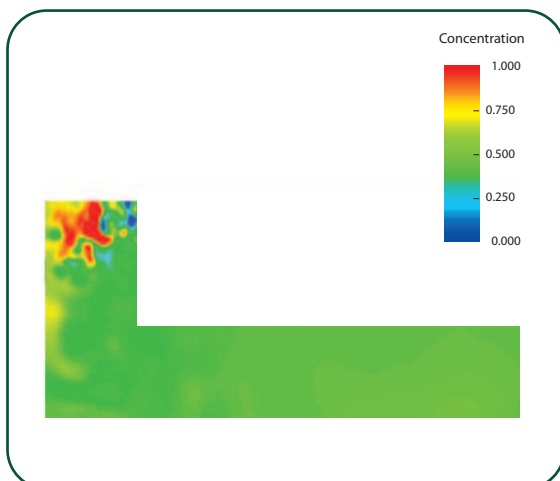
4KSH type mixing heads are designed to produce 2 and more different type of foams by one mixing head.



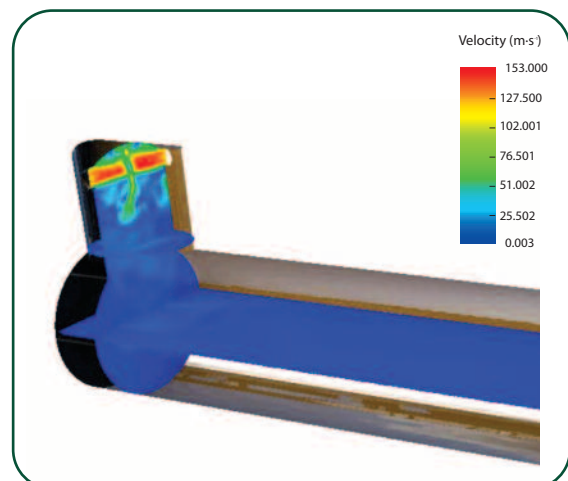
DHVA-1220-4KSH



DHV-1622-6KSH

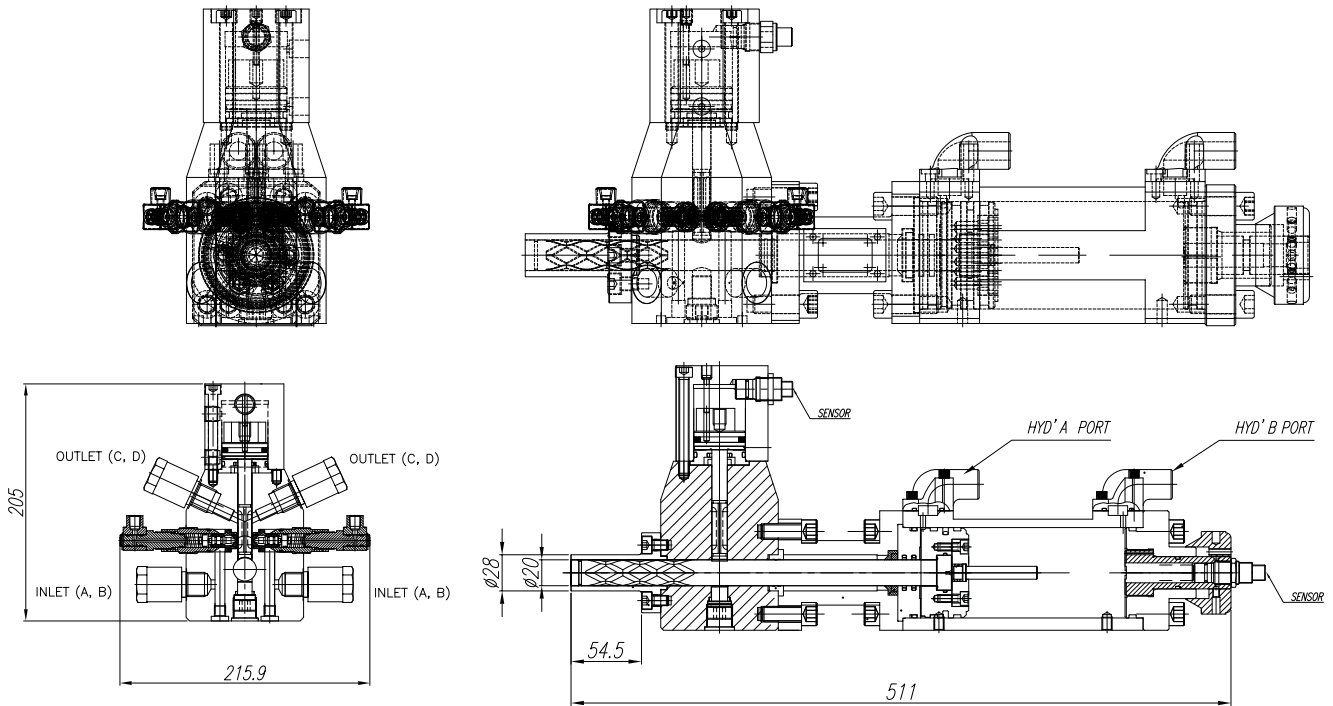


Concentration

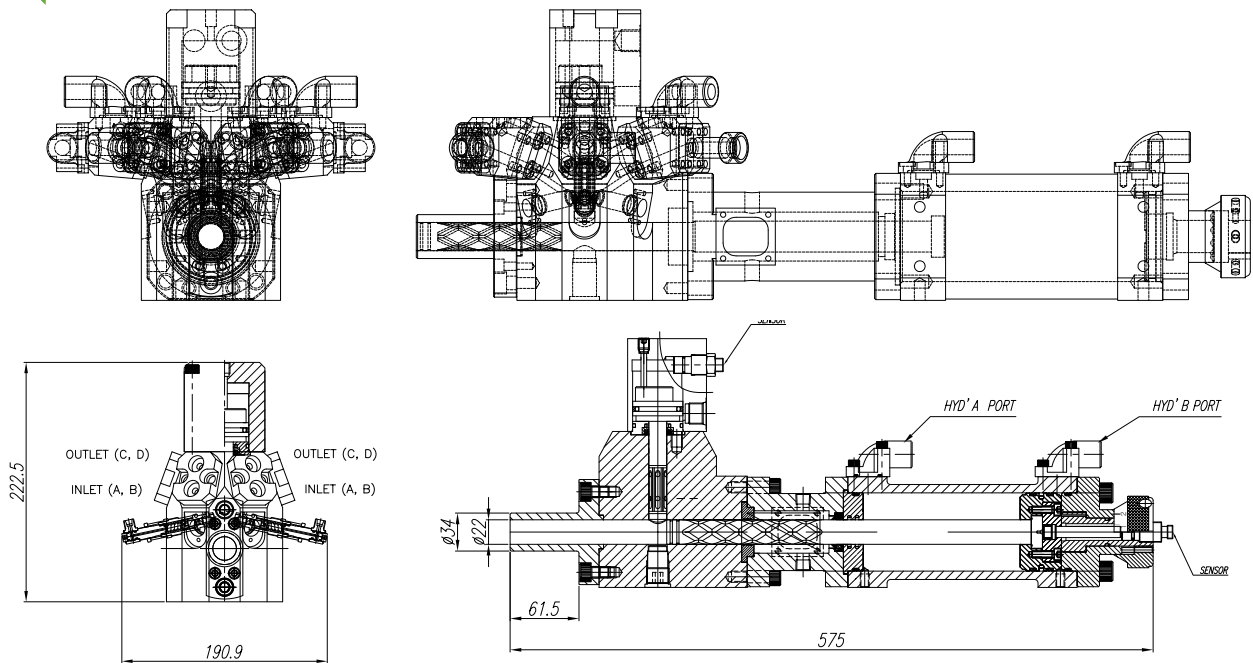


Velocity

DHVA-1220-4KSH



DHV-1622-6KSH



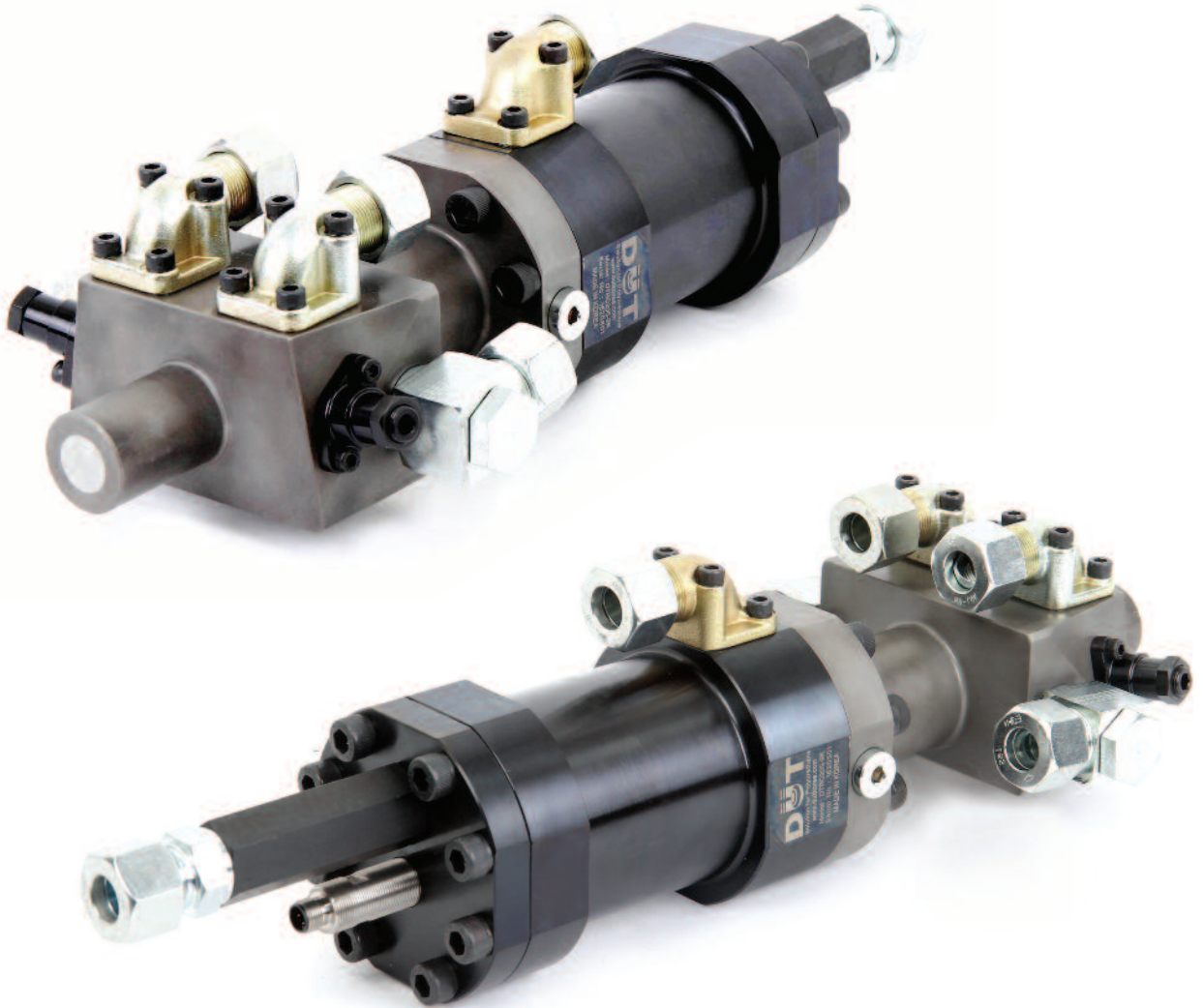
MIXING HEAD MODEL	Close Mold			Open Mold	KG
	1 : 1	1 : 2	1 : 3		
DHVA-1220-4KSH	130~1100	130~950	150~700	130~550	24kg
DHV-1622-6KSH	130~1200	130~1000	150~850	130~680	34kg

DHS SERIES

DHS Series called R-type mixing head in common and it is applied to inject big volume of output.

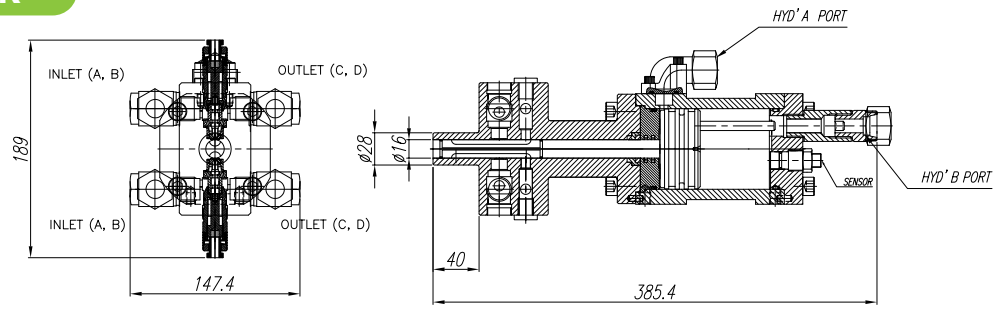
DHS NA type is special type for PU sandwich panel line.

•Maximum one year warranty

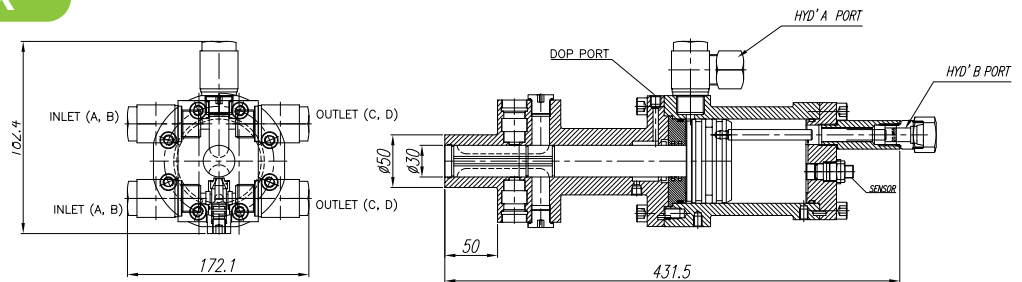


Concentration

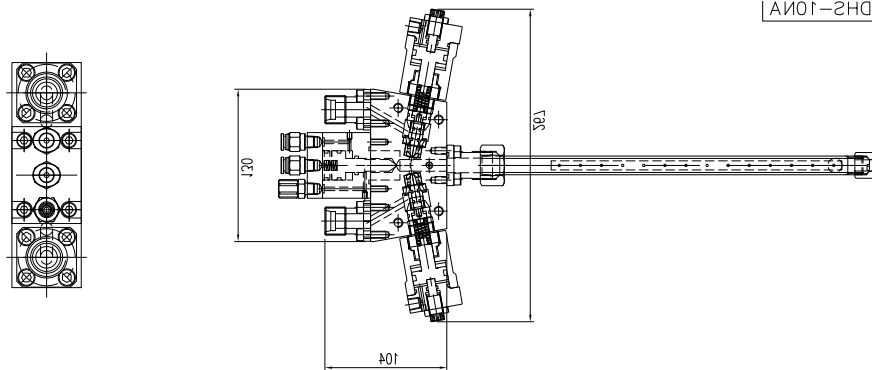
DHS 16R-2K



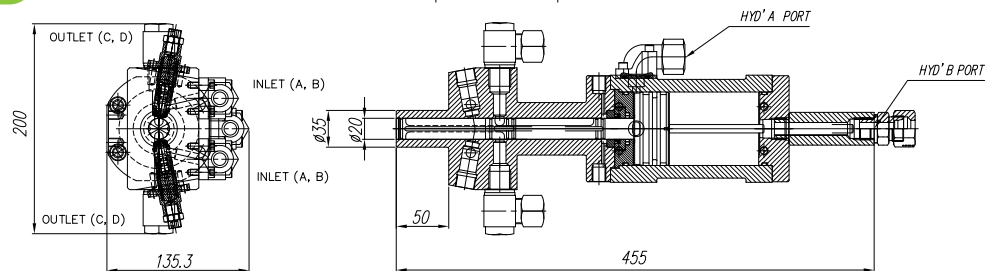
DHS 30R-2K



DHS 10NA-2K



DTRC 20S-2K



MIXING HEAD MODEL	Close Mold			Open Mold	KG
	1 : 1	1 : 2	1 : 3		
DHS-003R-2K	10~80	15~80	20~50		2kg
DHS-010R-3K	110~800	80~450	80~350		10kg
DHS-012R-2K	150~1300	230~1000	250~900	150~80	8kg
DHS-012RV-2K	150~1300	230~1000	250~900	150~80	8kg
DHS-014R-2K	280~1600	250~1500	240~1400		14kg
DHS-016R-2K	400~2000	250~1300	270~1300		15kg
DHS-016R-3K	400~2000	250~1300	270~1300		16kg
DHS-018R-2K	400~2500	450~2300	500~2000		17kg
DHS-025R-2K	1000~50000	1250~4500	1400~4100		24kg
DHS-030R-2K	1000~8000	1250~4500	1400~4100		29kg
DHS-036R-2K	3000~10000	3050~10200	3500~9000		32kg
DHS-036R-4K	3000~10000	3050~10200	3500~9000		32kg
DHS-08VN-2K				40~300	3kg
DHS-10NA-2K				80~500	5kg
DTRC-020S-2K	600~3000	650~2250	700~2000		19kg

GLOBAL NETWORK

 **DUT-China**
SHANGHAI
E-mail : Kimhongam@hotmail.com



DUT-Korea Head Office
914-4, Janglim-dong, Saha-gu, Busan, Korea 604-040
E-mail : webmaster@dutkorea.com



 **DUT-Russia**
MOSCOW
E-mail : khmile@lprglobal.com

 **DUT-Europe**
LUXEMBOURG
E-mail : fesselbrandjy@pofi.lu

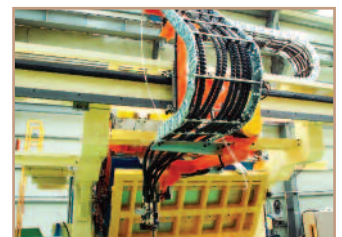
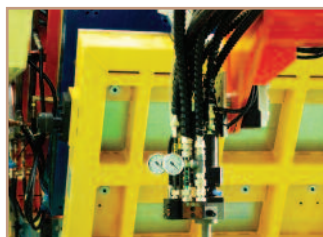


 **DUT-Iran**
TEHRAN
E-mail : info@bfgco.com

 **DUT-middle East**
DUBAI
E-mail : business@dutkorea.com

 **DUT-India**
MUMBAI
E-mail : franco@dutkorea.com

 **DUT-South Africa**
CAPE TOWN
E-mail : africa@dutkorea.com





ULTIMATE HIGH PRESSURE MIXING HEAD

HIGH PRESSURE MIXING HEAD

R&D

DUT's R&D Team consists of PU specialists. They are always consider to solve customer's difficulties and DUT's innovative technology is created from customer's requirement. DUT's R&D center is totally set by customers.

Q/A

To offer reliable products, Q/A team has been working to control product's quality. The technical data and troubleshootings are stored in DUT's Q/A database, and it helps to produce DUT's better products

PRODUCTION

The Production team has organized by skilled engineers and they manufacture DUT's innovative products by reliable equipments.

Korea Head Office

Address : 914-4, Janglim-dong, Saha-gu, Busan, Korea
604-040
E-mail : webmaster@dutkorea.com
info@dutkorea.com
sales@dutkorea.com
Tel : + 82 51 202 0586
Fax : + 82 51 202 0647

China Office

Address : Rm501-A, Hengjie Bldg, No.1234,
Xinsongjiang Road, Songjiang Shanghai, China,
201600
E-mail : Kimhongam@hotmail.com
Tel : + 86 216 782 5061
Mobile : + 86 13801883360

India Office

Address : 1901 Skywalk Tower Tank Road Orlem,
Malad West Mumbai 400064 INDIA
E-mail : franco@dutkorea.com
Tel : +91 22 32924679
Mobile : +9821025714

Europe Office

Address : 19, rue de Luxembourg L-4391 PONTPIERRE
E-mail : fisselbrandjy@pofi.lu
Mobile : + 33 6 78 66 41 26
Fax : (00 352) 26 55 68 55

Brazil Office

Address : Rua Dona Maria Fidélis, 161, Diadema - SP-
Brasi, BRAZIL
E-mail : comex@amino.com.br
Tel : + 55 11 4077 3777

North America Office

USA Office.
Address : 2425 Amesbury Road - Akron, OH 44313,
USA
E-mail : Jeff@hunterpure.com
Tel : + 1 330 805 4414
Mobile : +1 330 801 6766
Fax : +1 330 805 4414

Canada Office

Address : Toronto, Ontario, Canada
E-mail : khmile@lprglobal.com
Tel : + 1 905 370 0410
Fax : +1 416 572 3736

Iran Office

Address : No.11, Second floor, Build, NO.382, Moalem
Blvd. Yaft Abad, Tehran-Iran
E-mail : info@bfgco.com
Tel : +9821 66211 994
Fax : +9821 6629 6919